



Warwick is PRIMED for a launch of Dual Language Programs

Warwick Public Schools (WPS) has a large concentration of multilingual learners (MLLs) yet there are no bilingual or dual-language programs established in Warwick. The data is clear: outcomes are better, demand is high, and current programming isn't keeping up. **All Warwick students deserve an education that centers the community's multilingual strengths and workforce development needs.** Its K-12 MLL and middle and high school World Language programs provide a strong foundation upon which to build. With coordinated action and strong policy initiatives, Warwick can become a leader in language education in the state.



Why Dual Language

Dual language programs serve both MLLs and non-MLLs and teach academic content through two languages (at least 50% of the school day is spent learning in the non-English partner language, such as Spanish). The aim is for all students to become bilingual and biliterate, have high academic achievement, and develop cross-cultural competence.

Dual Language Programs Have Been Proven To



1. Improve reading proficiency



2. Increase high school graduation rates & likelihood of attending college

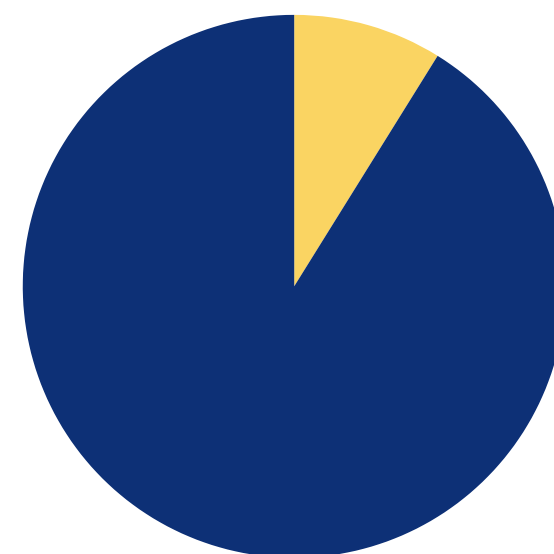


3. Improve economic outcomes for multilingual learners

In Rhode Island...

- Multilingual learners (MLL) make up **14%** of the total student population – 19,674 students.*
- Multilingual learners (MLL) in RI have increased by **92%** in the past 10 years.*
- Only 1,743 MLL students in RI are enrolled in dual language programs**

Enrolled in Dual Language Programs **8.9%**



Not Enrolled **91.1%**

*RIDE Data on Multilingual Learners
**RI Kids Count 2025 Factbook

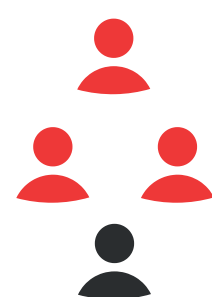
The Outcomes Are Better

MLL Students Meeting RICAS Standards

	ELA	MATH	SCIENCE
Warwick Public Schools	8.1%	13.5%	8.2%
Leviton Dual Language School in Providence	13.8%	28.9%	13.6%

Sense of Belonging Drives Better Outcomes

Dual language programs build connection and confidence, reducing chronic absenteeism and supporting stronger academic outcomes.



25% of WPS MLL students are chronically absent

compared to only

12.7% at Leviton Dual Language School (preK-5)



*Source: RIDE Report Card | School Year: 2024-25 | LEA: Warwick, Providence

Warwick at a glance

316

students are MLLs in Warwick Schools

the MLL student population increased by

336%

from 2013-2023,

demonstrating the incredible need for dual language education in Warwick

9.5%

of Warwick residents

live in multilingual households, with

Spanish, Portuguese, French & Italian widely spoken

WHY IT MATTERS

Dual-language education is one of the most effective strategies for improving academic outcomes, graduation rates, and long-term economic mobility, especially in districts with high multilingual learner populations like Warwick.



High Need, Limited Access

High Multilingual Need

Warwick is designated a high-incidence multilingual learner (MLL) district, meaning:

- 250+ multilingual learners, or
- 20% or more of total student enrollment

Warwick meets and exceeds this threshold.

Limited Dual Language Access

Warwick offers no dual language programs, forcing students to seek them in charter or private schools. One of these nearby schools, **Leviton Dual Language School** in **Providence** serves students in grades K–5.

Access has not kept pace with community need.

Local Leadership Can Close the Access Gap

Local leaders play a critical role in expanding access to dual-language education through planning, policy alignment, and advocacy for state investment.

Passing the **Support and Access to Bilingual Education (SABE) Act** would give districts like Warwick the tools to:



Plan and expand dual-language programs



Invest in multilingual teacher pathways



Meet current community and workforce needs

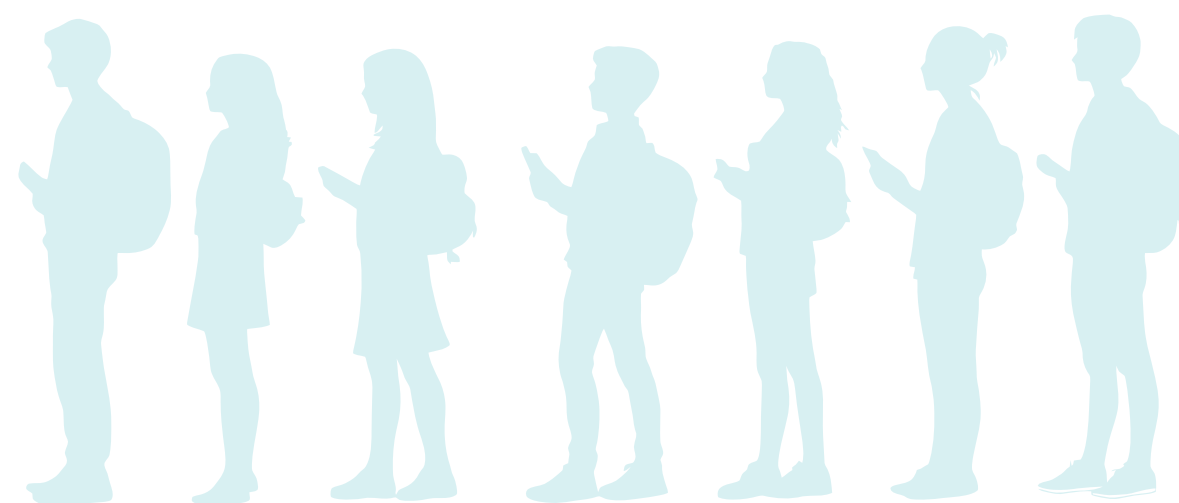
Take Action for Multilingual Learners

- ✓ Form a district dual language task force
- ✓ Pass the Warwick bilingual education resolution
- ✓ Come to the State House to testify in support of the SABE Act

Support and Access to Bilingual Education (SABE) Act

Representative Morales (HB 7389) and Senator McKenney (SB 2555)

1. Investing \$650,000 in funding multilingual teacher certifications and creating job opportunities for underemployed Rhode Islanders.
2. Investing \$300,000 in developing dual language programs across the state.



“This bill isn’t just about scholarships—it’s about investing in people like me....It’s about creating a sustainable teacher pipeline that ensures every student has the support they need to succeed.”

– Felix Fonseca Garcia, a RIC World Languages Student Teacher



Research shows dual-language education leads to stronger academic and economic outcomes for multilingual and monolingual students alike.

*Source: American Councils for International Education / Stanford CREDO

Warwick at a glance, cont.

1306

Students in Warwick Schools identify as Hispanic/ Latinx

Which indicates a high probability of multilingual households.



Warwick’s economy depends on bilingual skills

WHY IT MATTERS

- All students benefit from dual language programs, not just multilingual learners.
- 9 out of 10 employers rely on bilingual and multilingual employees.
- People who speak more than one language **earn an average of 5-20% more** than those who don’t.